

# **UCLA** College | Life Sciences **Center for Reproductive Science, Health & Education**

## **Newsletter | Fall 2025**

The UCLA Center for Reproductive Science, Health and Education (CRSHE) envisions a future in which reproductive policies and care are based on rigorous science, and access to this care is more equitable.

### **Director's Message**



One of the main goals of CRSHE is to make science equitable, accessible and inclusive. With this in mind, we were thrilled to kick off the academic year with our Distinguished Speaker Series, hosting the California Surgeon General, Dr. Diana Ramos, who is committed to policies that promote the health and wellbeing of all Californians. A major focus of her platform involves families and strategies to promote reproductive health from preconception through pregnancy and the first five years of childhood. Her policies resonate with ongoing scientific research at UCLA addressing reproductive health and the environment.

On this topic, we are delighted to share that Patrick Allard from the UCLA Institute for Society and Genetics has received a Fulbright U.S. Scholar Award to explore policy and governance of pesticides. This complements Patrick's scientific research on the same topic.

Meanwhile, infertility treatments remain in the news as federal policies are under development to make reproductive care affordable and accessible. I also invite you to listen to our CRSHE podcast, which discusses surplus embryos and the difficult personal choices that people make around this aspect of fertility care. Through these various speakers, interviews, and ongoing research initiatives, CRSHE continues to fulfill its mission of making science not just accessible, but meaningful to the communities we serve.

Thank you to all our supporters and donors for your unwavering support of all we do at CRSHE.

Warm regards,

Amander Clark, Ph.D.  
Director, Center for Reproductive Science, Health and Education

Professor, Molecular, Cell and Developmental Biology  
UCLA College of Letters and Science

## Spotlight: Distinguished Speaker Series

### **CRSHE Fall 2025 Distinguished Speaker Series Event featuring California Surgeon General, Dr. Diana Ramos**

We were honored to welcome California Surgeon General Dr. Diana Ramos as our most recent UCLA CRSHE Distinguished Speaker. Dr. Ramos shared her insights on advancing reproductive and maternal health equity across California, highlighting the importance of collaboration, prevention and community-centered care. Her talk sparked meaningful conversation and motivated UCLA students to continue championing equitable health outcomes statewide.

You can view the event recording [here](#), as well as read featured articles on Dr. Ramos and her talk in the [Daily Bruin](#) and [UCLA Life Sciences Newsroom](#).



## Event Recap: CRSHE Seminar with Professor Stephanie Correa

We kicked off our Fall 2025 Seminar Series with Professor Stephanie Correa, who shared how estrogen helps the brain balance temperature and energy during different reproductive states. Her lab's research reveals the powerful ways hormones coordinate brain activity in order to meet the body's changing needs. Stay tuned for upcoming monthly CRSHE seminars [here](#).



## Congratulations to Professor Patrick Allard: Fulbright U.S. Scholar Award

Patrick Allard, a professor in UCLA's Institute for Society and Genetics, has been awarded the prestigious Fulbright U.S. Scholar Award for his project, "Closing the Loopholes: Rethinking Pesticide Policy and Governance." As part of this research, Professor Allard will examine how pesticide regulations are developed, implemented, and challenged across different regulatory landscapes. The work will examine the alignment between biological and community-based evidence and regulatory policies. You can read more about Professor Allard's project and research [here](#).

Professor Allard has recently shared insights from his work with the CRSHE community, both as part of the Center's October Seminar Series as well as on his [interview episode with the CRSHE podcast](#), where he discusses toxic exposures and reproductive health.

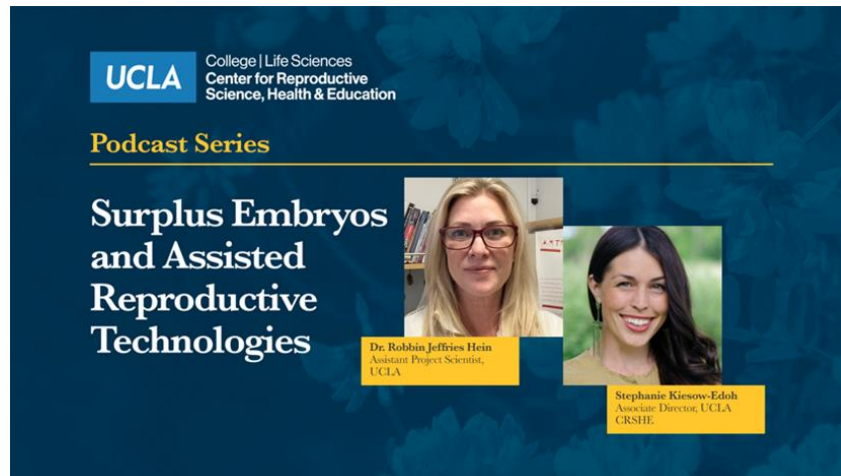


## New Episodes: Podcast Hosted by CRSHE Associate Director Stephanie Kiesow-Edoh

### **Surplus Embryos and Assisted Reproductive Technologies with Dr. Robbin Jeffries Hein**

CRSHE associate director Stephanie Kiesow-Edoh sits down with Robbin Jeffries Hein, an assistant project scientist at UCLA. They discuss the topic of surplus embryos following in vitro fertilization (IVF) treatment, the options available for their storage, and the growing number of embryos being stored in the U.S. today. Additionally, the discussion explores a new assisted reproductive technology (ART) called in vitro gametogenesis (IVG), which is the process of making gametes from stem cells.

Tune into the full episode [here](#).



### Perceptions on Periods with Dr. Sisi Peng

CRSHE associate director Stephanie Kiesow-Edoh sits down with Sisi Peng, a former doctoral researcher in UCLA's Department of Communication, to explore her groundbreaking work with the Haselton Lab on societal attitudes toward menstruation. The conversation examines how perceptions are shaped, pulling from social media discourse, survey research and controlled in-lab experiments. They also revisit highlights from Peng's recent CRSHE seminar, "Perspectives on Periods: Joy, Stigma and Disgust," which unpacks the cultural narratives that influence how periods are viewed today and the powerful role digital platforms play in sustaining — or challenging — these beliefs.

Tune into the full episode [here](#).



### New Blog Post: Behind the Scenes of REACH

#### The Reproductive Education and Community Health Organization Changing the Lives of Middle and High School Students in the LA Area

REACH (Reproductive Education and Community Health) is empowering the L.A. area youth through science-based, 12-session programs on anatomy, consent, healthy relationships and body image — led by trained college-student educators who create a relatable, supportive environment.

Their work is helping middle and high school students make informed, confident decisions about their health and relationships. You can read more about REACH [here](#).



## View our 2025 Annual Report

We are happy to share our 2025 Annual Report. This year's highlights showcase our community's growth and our collective impact. Thank you for being part of our journey — your support continues to make a difference!

You can read the final report [here](#).



## Donor Spotlight

We would like to thank Good Hope Medical Foundation for their generous donation to support the

CRSHE Fellowship Program. This program directly supports the work of trainees and fellows performing reproductive science research at UCLA.

Follow us on [LinkedIn](#), [Instagram](#), and [X](#) to keep up with our current news.

---